

DIGIT 6 - PANEL CONSTRUCTION

GAMMA[®] SERIES | O PANEL CONSTRUCTION



GAMMA[™]

SIMPLY THE BEST AVAILABLE MID-PRICE
RANGE OPERABLE WALL

- SUPERIOR SOUND STOPPING ABILITY
- GREATER STRENGTH AND DURABILITY
- DISCREET AND EFFECTIVE PROTECTIVE
EDGE TRIM
Saves the otherwise vulnerable exposed finish on
corners of "wrap-around" and "trimless" designs.

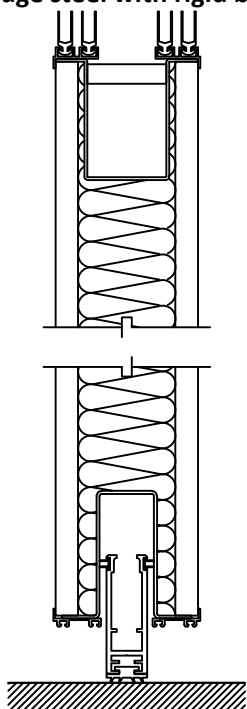
MANUAL OPERATION.

PANEL HEIGHT: 18' max.

PANEL WIDTH: 44" max. but do not exceed width of
finish fabric.

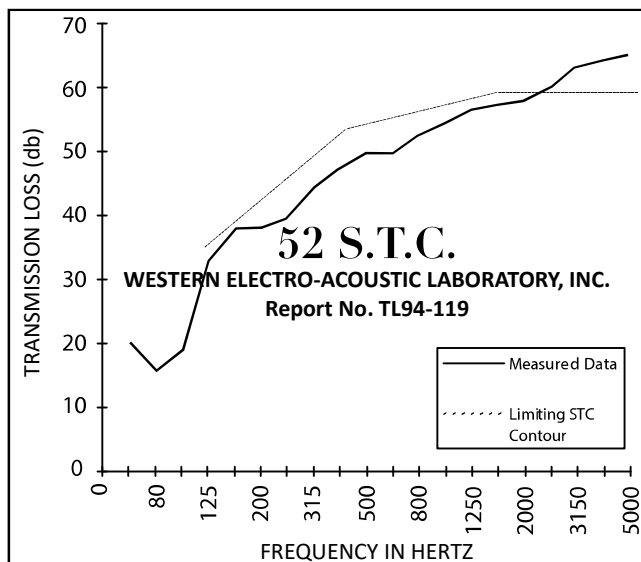
PANEL WEIGHT: 10.1 pounds per square foot.

SUBSTRATE: 20 gauge steel with rigid backing.



40 N.I.C.

GUARANTEED WHEN SPECIFIED
TESTED IN ACCORDANCE WITH ASTM E336



SPECIFICATIONS

PANEL CONSTRUCTION: Acoustical panel, approx. 4" thick, shall have composite faces consisting of ½" gypsum board and 20 gauge (0.036") steel. Core shall be fibrous glass sound attenuating material. Panel weight shall be approximately 10.1 psf (49.4 kg/m²). Frame members shall be roll formed steel, 16 gauge vertical and 14 gauge horizontal top rail. Steel frame members shall encapsulate face sheets and provide a protective edge feature. Tongue and groove vertical intersections shall incorporate multi-fin acoustical gaskets. No fasteners shall be visible on panel face when wall is in extended position. Frame members shall have paint finish (bronze and silver as standard colors with optional powder-coat available).

TEST DATA: Sound transmission class (S.T.C.) 52 minimum when tested in accordance with ASTM E90-90 in NSA accredited independent laboratory.

NOTE: Panel faces are a composite of cold rolled steel sheet and gypsum board. The standard orientation is with the steel IN, so the gypsum board substrate is a TACKABLE surface. When requested, for increased impact resistance and a NON-TACKABLE surface, the steel sheet can be furnished OUT.

(detail shows protective vertical edge trim)

