

DIGIT 6 - PANEL CONSTRUCTION

GAMMA[®] SERIES | N PANEL CONSTRUCTION



GAMMA[™]

**SIMPLY THE BEST AVAILABLE MID-PRICE
RANGE OPERABLE WALL**

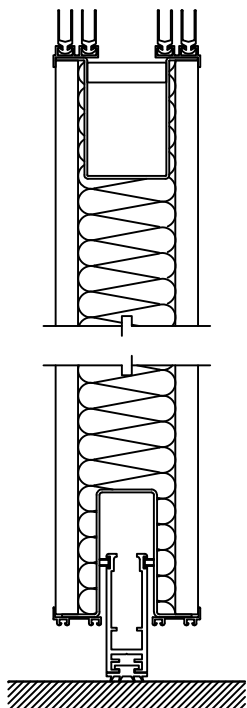
- **SUPERIOR SOUND STOPPING ABILITY**
- **GREATER STRENGTH AND DURABILITY**
- **DISCREET AND EFFECTIVE PROTECTIVE
EDGE TRIM**
Saves the otherwise vulnerable exposed finish on
corners of “wrap-around” and “trimless” designs.

MANUAL OPERATION.

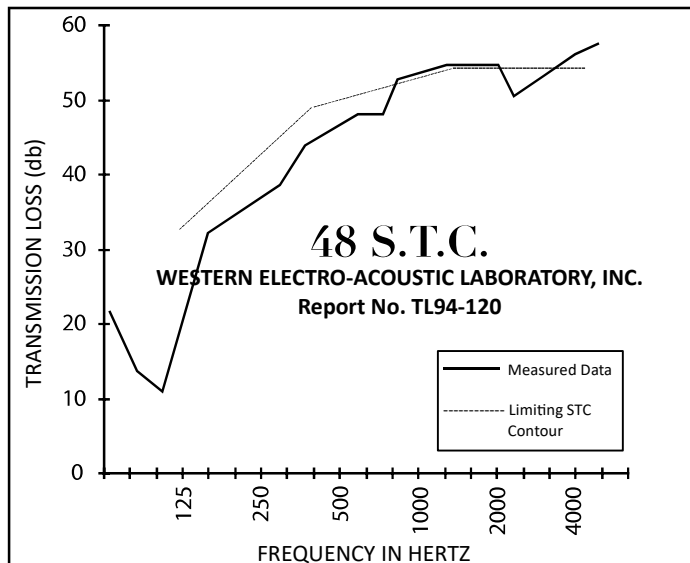
PANEL HEIGHT: 16' max.

**PANEL WIDTH: 44" max. but do not exceed width of
finish fabric.**

PANEL WEIGHT: 8.1 pounds per square foot.



38 N.I.C.
GUARANTEED WHEN SPECIFIED
TESTED IN ACCORDANCE WITH ASTM E336



SPECIFICATIONS

PANEL CONSTRUCTION: Acoustical panel, approx. 3 7/8" thick, shall have incombustible rigid faces. Core shall be fibrous glass sound attenuating material. Panel weight shall be approximately 8.1 psf (39.6 kg/m²). Frame members shall be roll formed steel, 16 gauge vertical and 14 gauge horizontal top rail. Steel frame members shall encapsulate face sheets and provide a protective edge feature. Tongue and groove vertical intersection shall incorporate multi-fin acoustical gaskets. metal perimeter trim shall have bronze anodized finish. No fasteners shall be visible on panel face when wall is in extended position.

TEST DATA: Sound transmission class (S.T.C.) 48 when tested in accordance with ASTM E90-90 in NSA accredited independent laboratory.

