

Image

WORLD CLASS® GLASS OPERABLE WALLS BY ADVANCED EQUIPMENT CORPORATION





Cover:
BAC Solarium
Guanacaste, Costa Rica
Gensler; Installed 2024

JW Marriott Ihilani
Oahu, Hawaii
"TENEMEC" finish protects from salt/air
Exterior View; Interior View



Crowne Plaza Hotel
El Salvador

IMAGE®

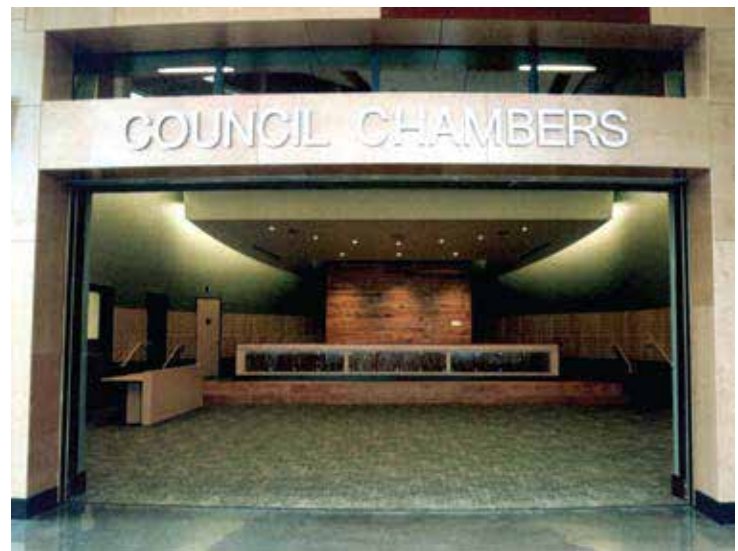
INCOMBUSTIBLE STEEL, QUALITY STRENGTH, PERFORMANCE and VALUE
COMPETITIVE PRICES, WELDED TUBE STEEL FRAME.

- SINGLE or DOUBLE GLAZED
- MANUAL or ELECTRONIC OPERATION
- PANEL HEIGHT 30' max.
- MAX PANEL WIDTH: Folding operation 60, individual panel operation 96, operation 180
- PANEL WEIGHT May range between 6.5 psf and 12 psf

NO FLOOR TRACK REQUIRED MOST APPLICATIONS.



San Diego Central Library
San Diego, California
Tucker Sadler Architects



Olympia City Hall,
Olympia, WA
Belay Architects
Glazed with Lumicor Resin Panels

VISIT OUR WEBSITE

www.advancedequipment.com for easy access to a wide range of design and application tools.

- Track selector guide
- Specifications
- Finish and glazing choices
- Configuration and storage options
- Downloadable AutoCad® files



Seasons 52 Fresh Grill
Los Angeles, CA



Torre Judicial
San Jose, Costa Rica
Gensler; Installed 2021

OPTIONAL LUMBER FINISH

The Summit at First Hill Synagogue
Seattle, WA
Mithun Architects
Custom wood clad finish

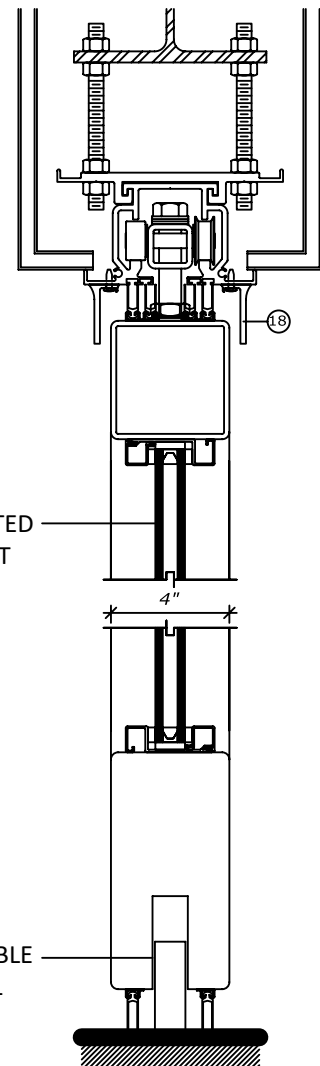
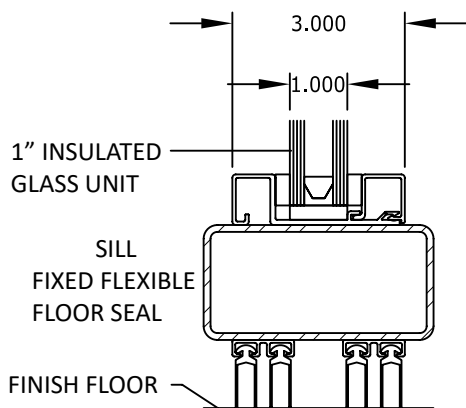
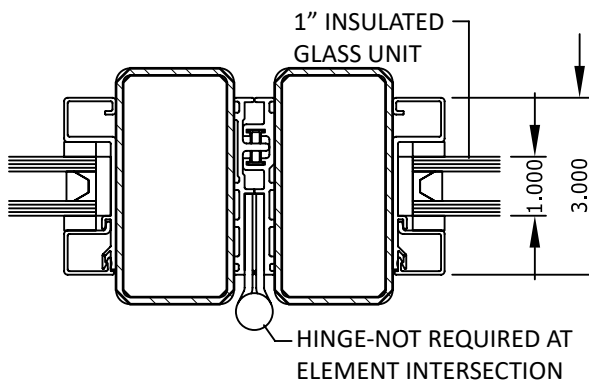


Asamblea Legislativa
Costa Rica





BLRB Architects
 Tacoma, WA
 BLRB Architects
 Custom powder coated, one piece welded steel frame



Image



Hotel Sheraton, Escazu
San Jose, Costa Rica
Installed 2020