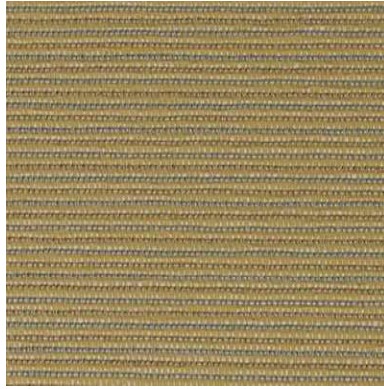


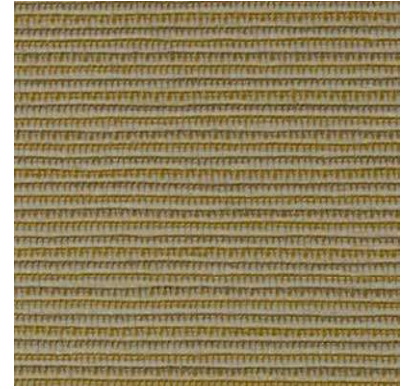
HYTEX[®]



Calypso110-03



Amulet134-08



Rattan134-07



Sunset110-09



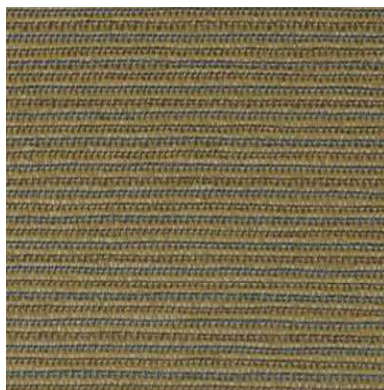
Penny110-10



Dorset Gold110-11



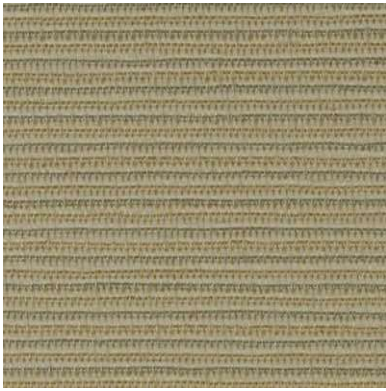
Safari110-12



Tamarind134-09



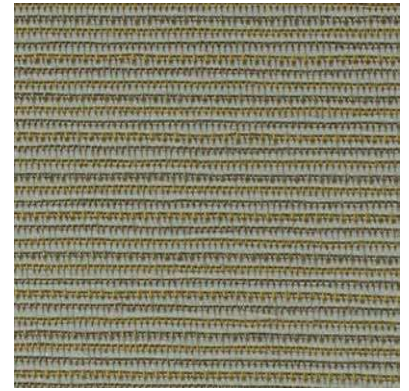
Grey Mist110-07



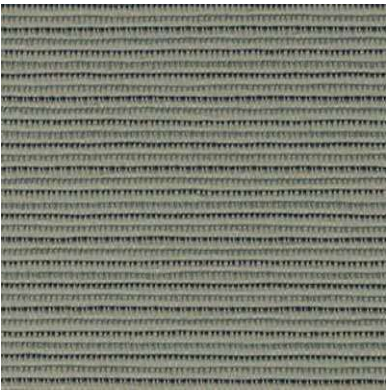
Beach Sand134-03



Sunwashed134-06



Umber134-10



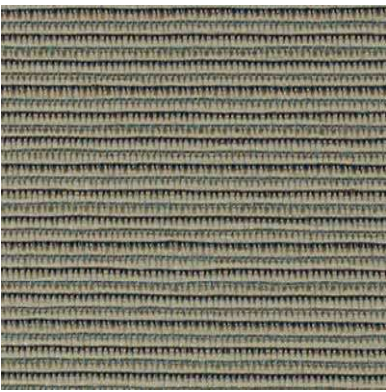
Marine134-04



Ice Blue110-05



Gardenia134-02



Glaucous134-05



Mediterranean110-06



Palm110-04



China134-01



Ocean Grey110-08



Candlelight110-02



Diamond110-01



HIGH PERFORMANCE ECO-FABRIC FOR VERTICAL SURFACES
Wallcoverings • Panel Systems • Partitions

U

tilizing a combination of pre-consumer and post-consumer recycled polyester to create unique performance yarns, Hytex Industries introduces our newest collection of vertical surface textiles for the commercial market.

ZEST
SPECIFICATIONS

CONTENT

- 67% polyester
- 33% olefin

BACKING

acrylic latex

FINISH

CryptonWall® 'Green'
Soil & Stain
Repellant

WEIGHT

18 oz.

WIDTH

54"

ROLL SIZE

50 yards

43% RECYCLED CONTENT

- 10% post-consumer (polyester)
- 33% post-industrial (olefin)

FLAMMABILITY

Passes: NFPA 265
Class A / ASTM E-84
FS: 20 / SD: 50
Passes: Cal 117
Passes: Vertical Burn

ABRASION RESISTANCE

(ASTM D-4157-02)
100,000 double rubs

COLOR FASTNESS TO LIGHT

(AATCC-16A)
Class 5.0 / 40 hrs.

ENVIRONMENTAL

does not contain:

- pvc
- chlorene
- plasticizers
- heavy metals
- formaldehyde
- ozone depleting substances
- volatile organic chemicals (voc's)

conserving natural resources:

- diverts waste from landfills
- offsets the need to refine new crude oil
- requires less energy to produce

Greenguard Gold Certified

- Number 23850-410
- formerly Children & Schools Gold Certified
- meets Calif 1350 High Performance Schools



© Hytex Industries, Inc. 2016 All rights reserved.

©2016 CRYPTON, Inc. CRYPTON and the planet logo are registered trademarks of CRYPTON, Inc. U.S. patent 5,565,265 and other U.S. and global patents issued and pending.

REPREVE is a registered trademark of Unifi, Inc.