

HYTEX[®]



Agate 39-01

Buttercream 39-04

Currant 39-06

Elm 39-08



Glacier 39-09

Graphite 39-10

Ice 39-11

Iron Ore 39-12

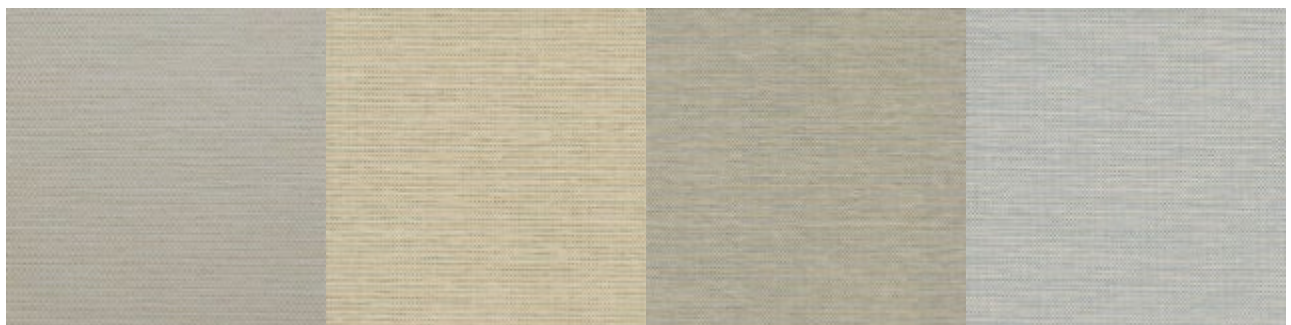


Natural 39-15

Sand 39-17

Truffle 39-22

Cornsilk 39-23

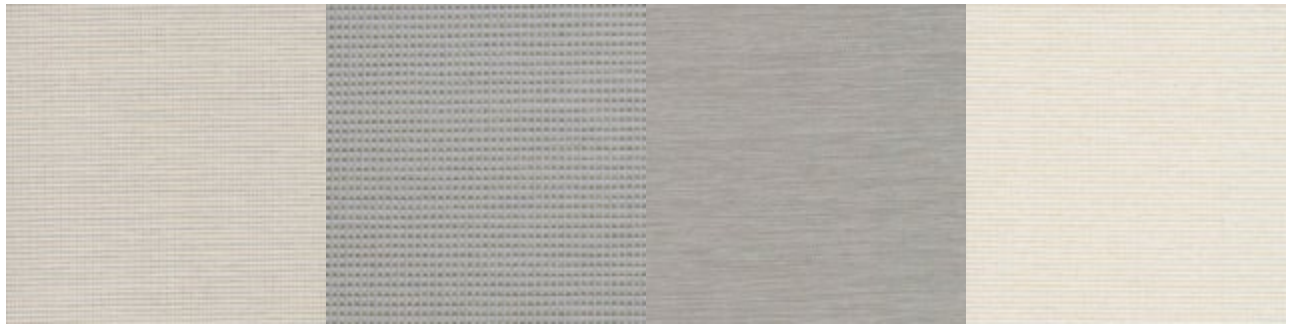


Parchment 39-24

Olive Grove 39-25

Casarina 39-26

Bahamas 39-27



Mist 39-28

Starlight 39-29

Silverado 39-30

Cottage 39-31

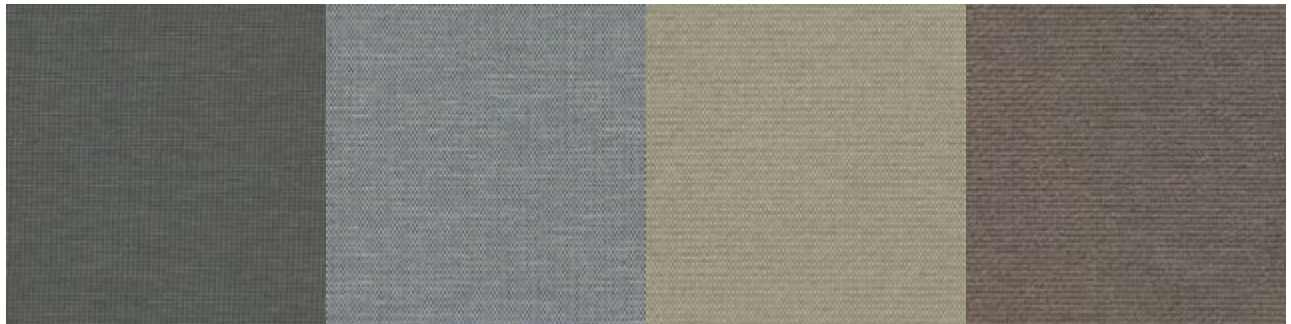


Plaster 39-32

Discover 39-33

Gray 39-34

Gated 39-35



Wilderness 39-36

Laguna 39-37

Element 39-38

Armor 39-39



Pepper 39-40

Product Details

Collection:	Hytex Textiles- Classic Wovens
-------------	--------------------------------

Material:	51% Polyester
	49% Olefin

Backing:	Acrylic Latex
----------	---------------

Standard Dimensions:	54 in x 3 ft = 13.5 sq ft
----------------------	---------------------------

Metric Dimensions:	137.16 cm x .91 m = 1.25 sq m
--------------------	-------------------------------

Match Type:	Random
-------------	--------

Pattern Repeat:	None
-----------------	------

STRATUS

HIGH PERFORMANCE WOVENS

Wallcoverings • Panels • Exhibits • Partitions

Adaptable and durable, this understated industry classic mimics industrial burlap updated with twists of shimmering, colorful yarns that run through the weave. Stratus is the perfect product for panel and operable wall projects.

SPECIFICATIONS

WIDTH:	54"	INSTALLATION:	Non-Reversible / Random Match
TOTAL WEIGHT:	13 oz, per linear yard	CONTENT:	51% Polyester, 49% Olefin
FINISH:	Stain Repellent		
BACKING:	Acrylic		

PERFORMANCE

FLAMMABILITY:	Passes ASTM E-84 Class A Tested in Accordance with EN13501: B-s1,d0 rating
COLORFASTNESS TO LIGHT:	(AATCC Method 16): Class 5 (40 hours)
COLORFASTNESS TO CROCKING:	(AATCC Method 8): Class 3 (Wet), Class 4 (Dry)
ABRASION RESISTANCE:	(ASTM D4157) Exceeds 30,000 Wyzenbeek Double Rubs

QUALITY STANDARDS

ENVIRONMENTAL:	Created with No PVC, No Heavy Metals or Formaldehyde, No ODSs, No Phthalates, No VOCs
CLEANING CODE:	WS & BC – Water/Solvent & Bleach Cleanable

INSTALLATION

Color & texture may vary slightly due to the nature of the fiber & structure.

Installation and maintenance instructions are enclosed with every shipment and should be carefully read prior to installation.

For best results, it is recommended that a qualified textile wallcovering installer be employed.

WARRANTY

5-year limited warranty against manufacturing defects.

USAGE AREAS

HEALTH CARE	HOSPITALITY	ENTERTAINEMENT	INSTITUTIONAL
<ul style="list-style-type: none">• Retirement Facilities• Nursing Homes	<ul style="list-style-type: none">• Ball Rooms• Conference Rooms	<ul style="list-style-type: none">• Theaters• Recreational Centers	<ul style="list-style-type: none">• Schools (Auditorium)• Government & Mass Trans. Buildings
<ul style="list-style-type: none">• Hospitals• Nursing Stations	<ul style="list-style-type: none">• Meeting Rooms	CORPORATE <ul style="list-style-type: none">• Executive Conference Rooms• General Offices	<ul style="list-style-type: none">• Day Care Center
	DESIGNERS <ul style="list-style-type: none">• Commercial Interiors Market		

HYTEX[®]
YORK CONTRACT

WWW.YORKCONTRACT.COM

The assigned numerical reading and other tests referenced in this text are not intended to reflect hazards presented by this or any other material under actual fire cognitions. Consult an architect or fire safety engineer for information on applicable building codes and reduction of fire hazards, including the use of sprinklers.



12-23