



VINYL

THREAD



Rolled

AE-TH82-20



Twine

AE-TH82-83



Jute

AE-TH82-11



Braid

AE-TH82-06



Fiber

AE-TH82-16



Fused

AE-TH82-01

MOONSCAPE



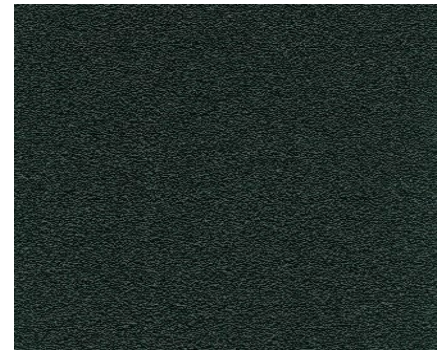
Snow

AE-MS59-02



Pearl

AE-MS59-92



Ebony

AE-MS59-99



Washed Denim

AE-MS59-79



Dusty Miller

AE-MS59-84



Uncharted

AE-MS59-38

ECO



Smoke

AE-ECG2-98

Birch Forest

AE-ECG2-53



Baroness

AE-ECG2-55

Earnest

AE-ECG2-10

Expectation

AE-ECG2-37

	US UNITS	METRIC UNITS
Total Weight	20.0oz. PLY	618g PLM
	13.3oz. PSY	451g PSM
	21.0oz. PLY3	651g PLM3
	14.0oz. PSY3	474.4g PLM3
Roll Width	52" - 55"	134 cm - 140 cm
Gauge	.022"	0.559mm
Tensile (Minimum)	50 x 55 lbf	222 x 245 N
Tear (Minimum)	25 x 25 lbf	111 x 111 N
Federal Spec.	CCC-W-408D, Type II	
WA Spec.	WA-101, Type II	
ASTM F-793	Category V, Type II	
Fire Testing	NFPA 101®, Life Safety Code® NFPA 255 (ASTM E-84, CAN S102M) Tunnel Test ¹ Class A Rating Flame Spread - 10 Smoke Developed - 5 NFPA 286 Corner Burn Test ² Meets requirements for Flame Spread, Smoke Developed and Flashover	
CE Certification	EU classification in accordance with EN 15102:2007 + A1:2011	
Indoor Air Quality	California 01350 - Meets emission requirements for schools and offices	
Repeat	Vertical	N/A
	Horizontal	N/A
	Nominal Information	51"
	Match Information	Reverse Hang, Random Match

1 When applied to GRC board with A-848-B adhesive
Applies to Cosmopolitan only

2 When applied to 5/8" Type-X-Gypsum board with A-848-B adhesive 3

ADVANCED EQUIPMENT CORPORATION

2401 WEST COMMONWEALTH AVENUE, FULLERTON, CA92833

EMAIL: sales@aecorp.net WEBSITE: www.advancedequipment.com

P. 714-635-5350 F. 714-525-6083

ADVANCED EQUIPMENT is a registered trademark of the Advanced Equipment Corporation Copyright

2008 PRINTED IN U.S.A. AEC FORM 3010