

**GAMMA<sup>®</sup> SERIES | N PANEL CONSTRUCTION**



**GAMMA™**

**SIMPLY THE BEST AVAILABLE MID-PRICE RANGE OPERABLE WALL**

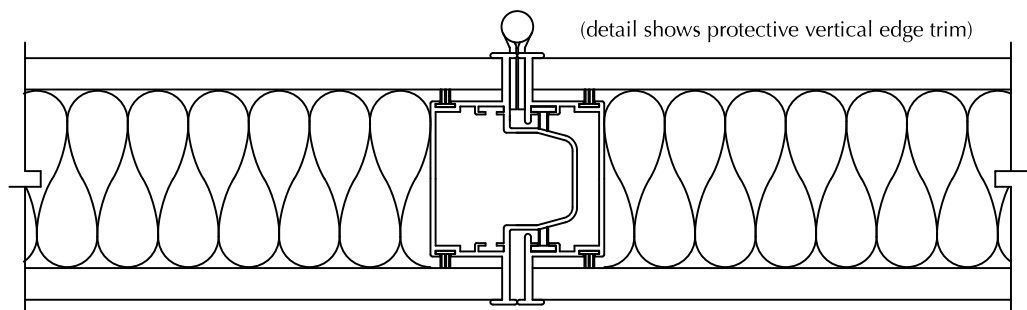
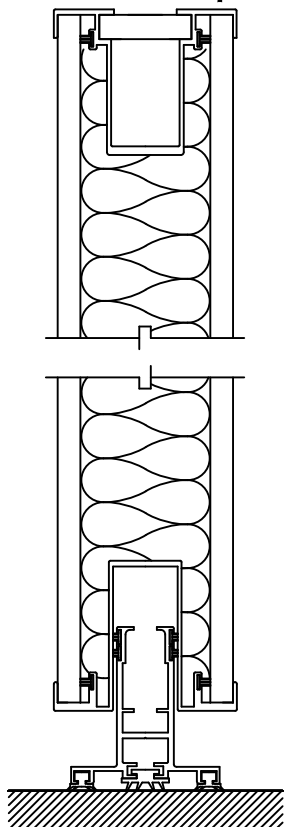
- **SUPERIOR SOUND STOPPING ABILITY**
- **GREATER STRENGTH AND DURABILITY**
- **DISCREET AND EFFECTIVE PROTECTIVE EDGE TRIM**  
Saves the otherwise vulnerable exposed finish on corners of “wrap-around” and “trimless” designs.

**MANUAL OPERATION.**

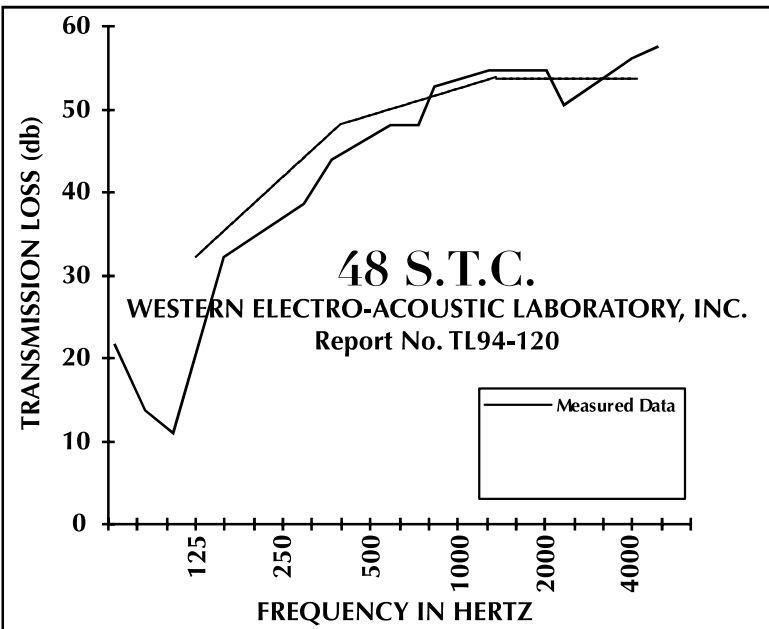
**PANEL HEIGHT: 16' max.**

**PANEL WIDTH: 44" max. but do not exceed width of finish fabric.**

**PANEL WEIGHT: 8.1 pounds per square foot.**



**38 N.I.C.**  
**GUARANTEED WHEN SPECIFIED**  
**TESTED IN ACCORDANCE WITH ASTM E336**



**SPECIFICATIONS**

**PANEL CONSTRUCTION:** Acoustical panel, approx. 3 7/8" thick, shall have incombustible rigid faces. Core shall be fibrous glass sound attenuating material. Panel weight shall be approximately 8.1 psf (39.6 kg/m2). Frame members shall be roll formed steel, 16 gauge vertical and 14 gauge horizontal top rail. Steel frame members shall encapsulate face sheets and provide a protective edge feature. Tongue and groove vertical intersection shall incorporate multi-fin acoustical gaskets. metal perimeter trim shall have bronze anodized finish. No fasteners shall be visible on panel face when wall is in extended position.

**TEST DATA:** Sound transmission class (S.T.C.) 48 when tested in accordance with ASTM E90-90 in NSA accredited independent laboratory.