

GAMMA[®] SERIES

L PANEL CONSTRUCTION



GAMMA™

IMPACT TOUGH

REINFORCED SUBSTRATE

SIMPLY THE BEST AVAILABLE MID-PRICE RANGE OPERABLE WALL

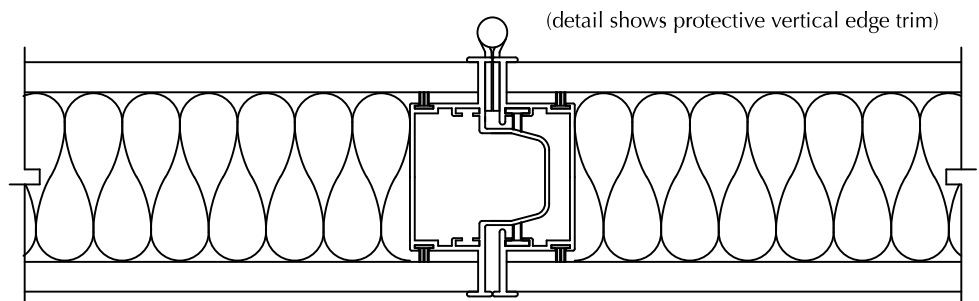
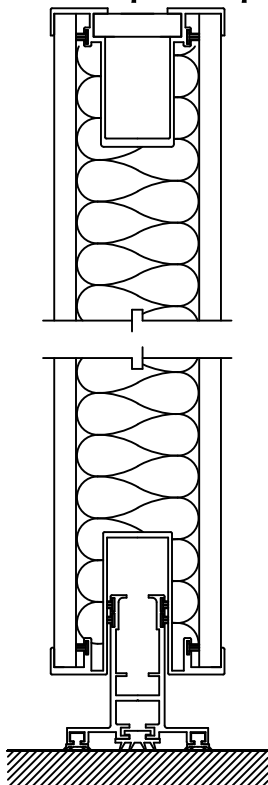
- **SUPERIOR SOUND STOPPING ABILITY**
- **GREATER STRENGTH AND DURABILITY**
- **DISCREET AND EFFECTIVE PROTECTIVE EDGE TRIM**
Saves the otherwise vulnerable exposed finish on corners of “wrap-around” and “trimless” designs.

MANUAL OPERATION.

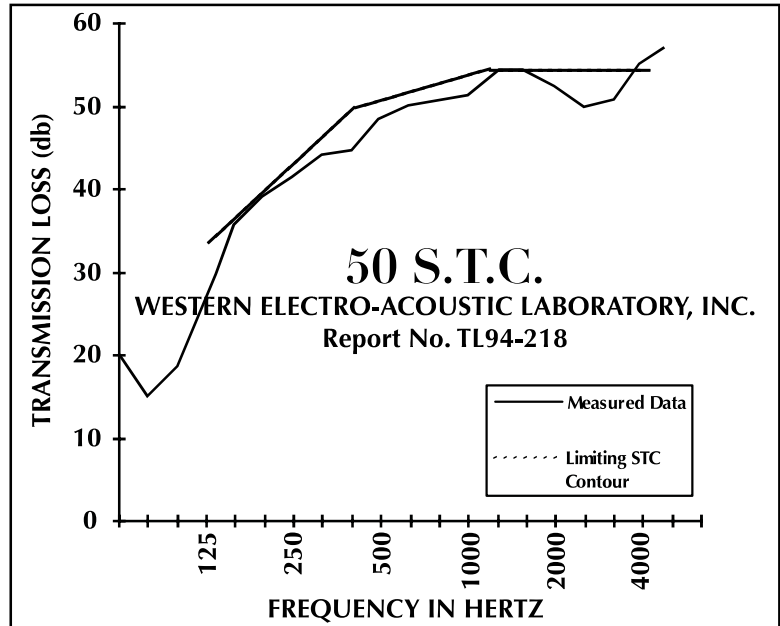
PANEL HEIGHT: 16' max.

PANEL WIDTH: 48" max. but do not exceed width of finish fabric

PANEL WEIGHT: 6.7 pounds per square foot.



39 N.I.C.
GUARANTEED WHEN SPECIFIED
TESTED IN ACCORDANCE WITH ASTM E336



SPECIFICATIONS

PANEL CONSTRUCTION: Acoustical panel, approx. 3 7/8" thick, shall have 1/2" thick impact resistant, particleboard faces. Core shall be fibrous glass sound attenuating material. Panel weight shall be approximately 6.7 psf (32.7 kg/m²). Frame members shall be roll formed steel, 16 gauge vertical and 14 gauge horizontal top rail. Steel frame members shall encapsulate face sheets and provide a protective edge feature. Tongue and groove vertical intersections shall incorporate multi-fin acoustical gaskets. Metal perimeter trim shall have bronze anodized finish. No fasteners shall be visible on panel face when wall is in extended position.

TEST DATA: Sound transmission class (S.T.C.) 50 when tested in accordance with ASTM E90-90 in NSA accredited independent laboratory.