

GAMMA[®] SERIES | H PANEL CONSTRUCTION



**GAMMA[™]
FULL HEIGHT FIBERBOARD
TACKABLE SUBSTRATE**

**SIMPLY THE BEST AVAILABLE MID-PRICE
RANGE OPERABLE WALL**

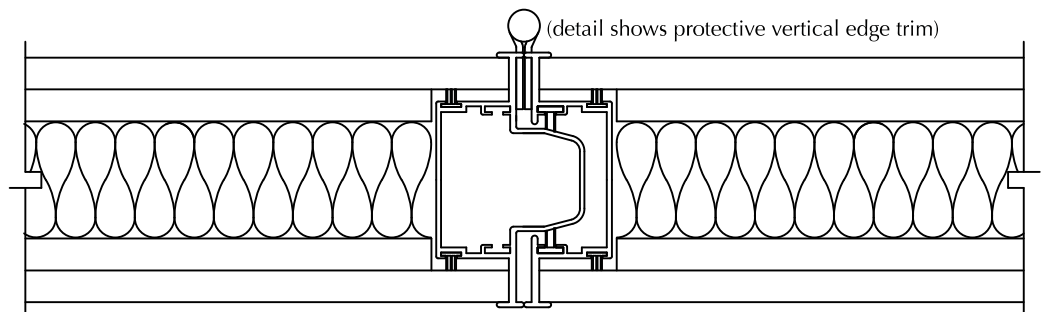
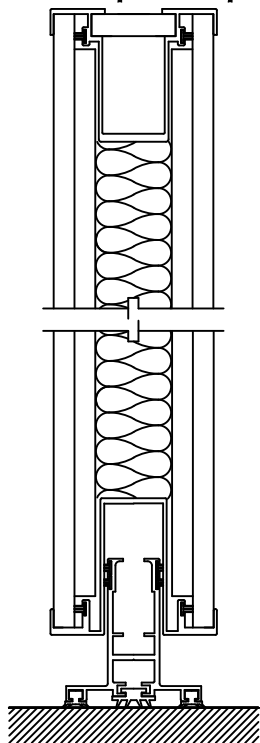
- **SUPERIOR SOUND STOPPING ABILITY**
- **GREATER STRENGTH AND DURABILITY**
- **DISCREET AND EFFECTIVE PROTECTIVE
EDGE TRIM**
Saves the otherwise vulnerable exposed finish on corners of "wrap-around" and "trimless" designs.

MANUAL OPERATION.

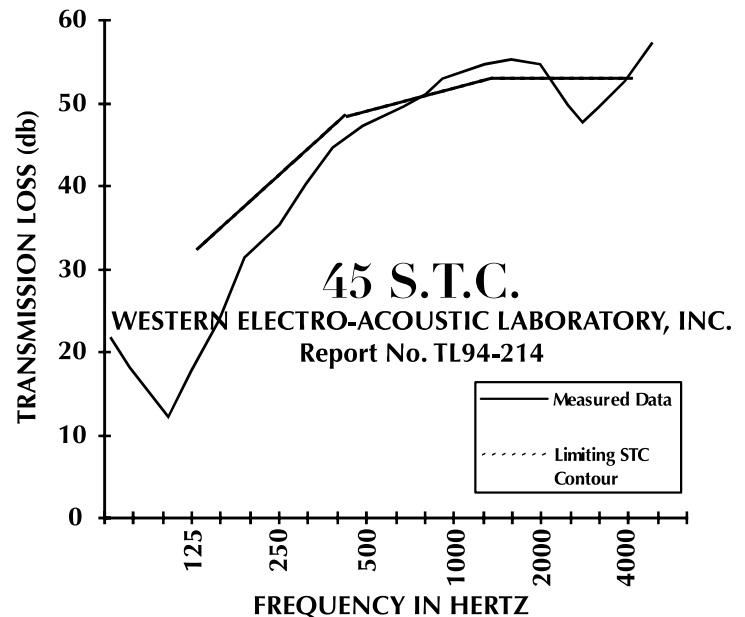
PANEL HEIGHT: 16' max.

**PANEL WIDTH: 48" max. but do not exceed width of
finish fabric**

PANEL WEIGHT: 8.6 pounds per square foot.



37 N.I.C.
GUARANTEED WHEN SPECIFIED
TESTED IN ACCORDANCE WITH ASTM E336



SPECIFICATIONS

PANEL CONSTRUCTION: Acoustical panel, approx. 3 7/8" thick, shall have 1/2" thick tackable medium density fiberboard (full surface tack-board) laminated to 1/2" rigid backer board. Core shall be fibrous glass sound attenuating material. Panel weight shall be approximately 8.6 psf (42.1 kg/m²). Frame members shall be roll formed steel, 16 gauge vertical and 14 gauge horizontal top rail. Steel frame members shall encapsulate face sheets and provide a protective edge feature. Tongue and groove vertical intersections shall incorporate multi-fin acoustical gaskets. metal perimeter trim shall have bronze anodized finish. No fasteners shall be visible on panel face when wall is in extended position.

TEST DATA: Sound transmission class (S.T.C.) 45 when tested in accordance with ASTM E90-90 in NSA accredited independent laboratory.