

Cune®



advanced
equipment®

® CORPORATION

Established 1957

WORLD CLASS® OPERABLE WALLS



ELECTRIC OR MANUAL OPERATION

The use of CURVE panel operation on curved tracks of the same radius provides the designer with a space division option that may be more compatible with the room design than can be achieved with the typical straight-line operable wall.

Electrically operated curved systems typically consist of one or more sliding elements that store in a deep narrow pocket or parallel to an adjacent room wall. If the electric wall consists of several moving elements then it is typical to have each element travel on its own track with elements storing parallel to each other.

When manually operated, the designer can utilize all curved panels or can incorporate both curved and flat panels within the same operable wall. Panels are moved individually. Panel storage for manual operation is much the same as with traditional operable walls but pocket depth may be somewhat deeper in order to accommodate the curved elements.

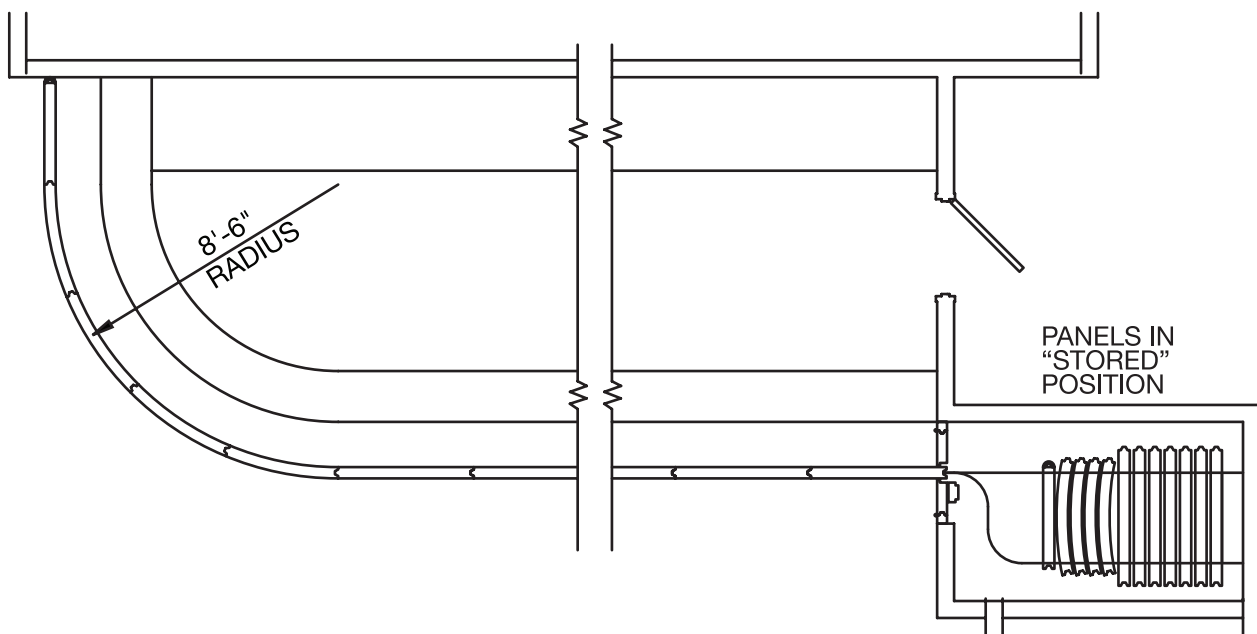


G.E. CAPITAL, UNIVERSITY OF CONNECTICUT; STORRS, CONNECTICUT

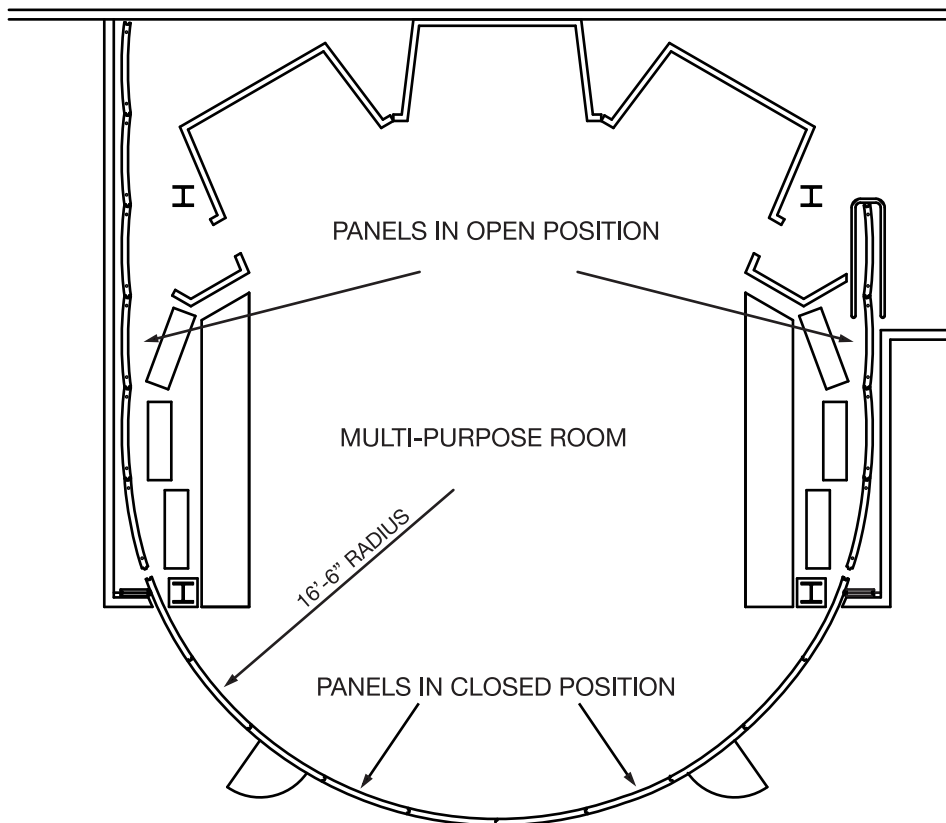
Bi-parting, electrically operated, curved panels and track with four panel elements traveling on two parallel tracks. Perforated sound absorptive panel faces with paint finish, inset pass door with lite also by AEC.
Architect: CPG Architects and Planners

Below: SAN DIEGO CONVENTION CENTER; SAN DIEGO, CALIFORNIA

ALPHA 'P' panel, welded steel construction, 14 gauge perforated steel faces robotically fusion welded to 14 gauge frame members, NRC 0.65, manual operation.



PLAN VIEW OF OSRAM SYLVANIA CURVED WALL



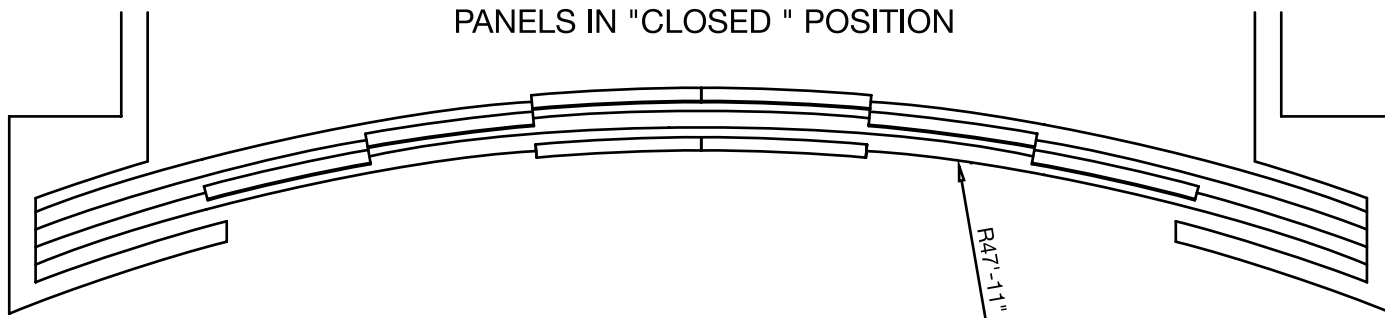
OSRAM SYLVANIA LIGHTING LABORATORY; DANVERS, MASSACHUSETTS

Curved ALPHA welded steel panels hinged in trains using "SOSS" fully concealed hinges suspended on single track, electrically operated, bi-parting, fabric finish with powder coat trim, custom color seals and inset pass-doors.

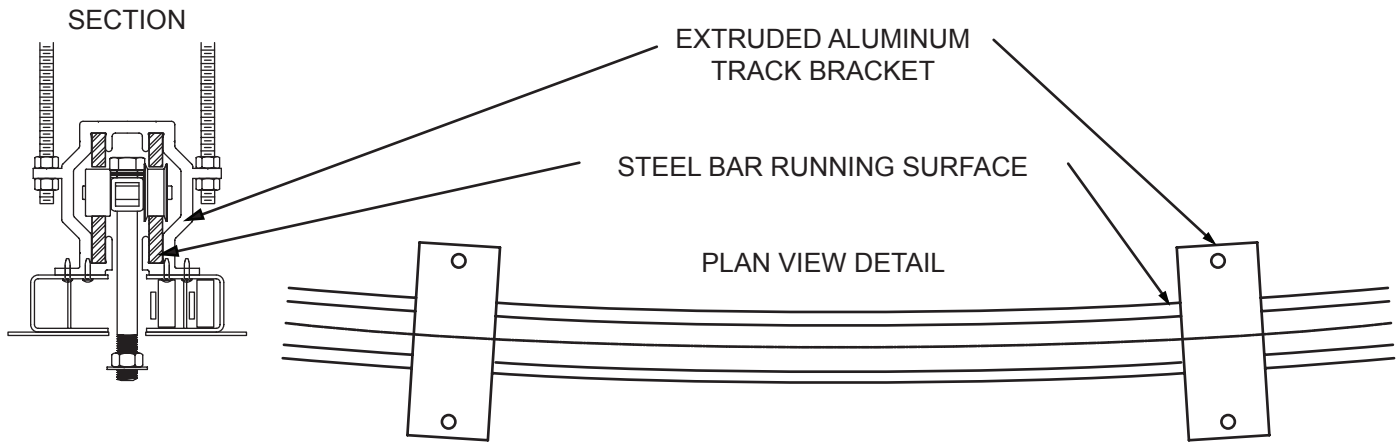
Architect: Design +
Installed: 1994



PANELS IN "CLOSED" POSITION



ADVANCED EQUIPMENT NO. 4 CURVED TRACK



STEEL PANEL CONSTRUCTION

The all welded, all steel construction with heavy steel (16 or 14 gauge) faces robotically fusion welded every 8 inches to perimeter frame members - gives you the best obtainable rigidity, life expectancy, low maintenance, and ease of operation.

One piece panels to 60 feet high. Panel widths to 60 inches.

Ten year limited panel warranty.

The BEST in guaranteed sound stopping. STC to 54, field tested NIC 40 ASTM E 336 - on your job, if specified. Available acoustically absorptive NRC 0.65.

Qualifies for LEED Credit MR 4.1 & MR 4.2

WACHOVIA BANK; CHARLOTTE, NORTH CAROLINA

Electrically operated: curved, welded tubular steel frames with lumber finish, curved aluminum track.
Water jet cut aluminum grill with custom powder coat finish.
Architects: Fishero, McGuire, Krueger Architects
Installed: 1999

i2 TECHNOLOGIES INC.;; DALLAS, TX

Alpha panel, curved, electrically operated wall with groups of panels joined to create three wall elements. Wall elements are stacked when stored.
Architect: The Lauck Group



ADVANCED EQUIPMENT CORPORATION

2401 WEST COMMONWEALTH AVE., FULLERTON, CA 92833

P. 714-635-5350 F. 714-525-6083 www.advancedequipment.com

ADVANCED EQUIPMENT is a registered trademark of the Advanced Equipment Corporation Copyright 2011

PRINTED IN U.S.A. AEC FORM 3005