

SIGMA[®] SERIES | E PANEL CONSTRUCTION



SIGMA
INCOMBUSTIBLE STEEL, QUALITY, STRENGTH,
PERFORMANCE, AND VALUE at competitive prices.

ROBOTICALLY FUSION WELDED

- MINIMUM 16 - GAUGE STEEL FACE.
- FACE SHEET WELDED TO FRAME.
- PROTECTIVE VERTICAL EDGE TRIM
 or
 FINISH WRAPPED AROUND EDGE.
- LIGHT WEIGHT.

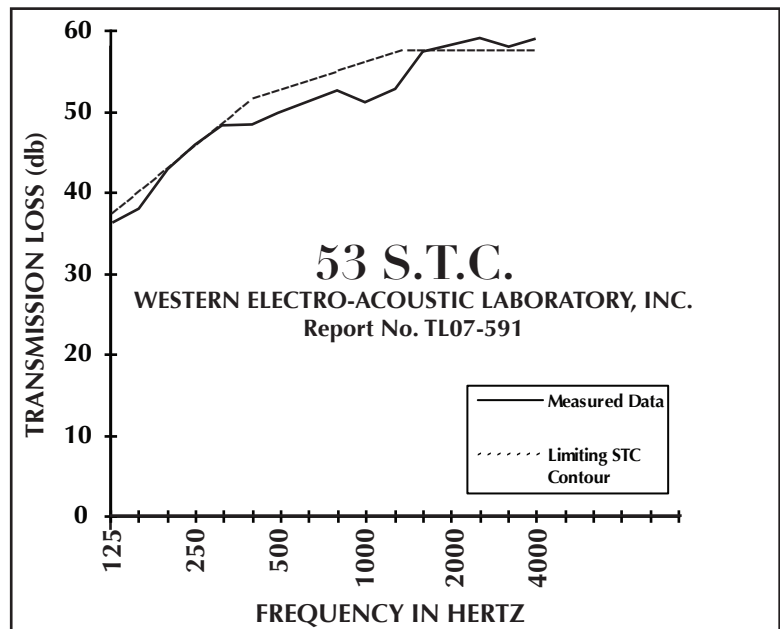
MANUAL OR ELECTRIC OPERATION.

PANEL HEIGHT: 35' max.

PANEL WIDTH: 54" max. but do not exceed width of finish fabric.

PANEL WEIGHT: 7.9 pounds per square foot.

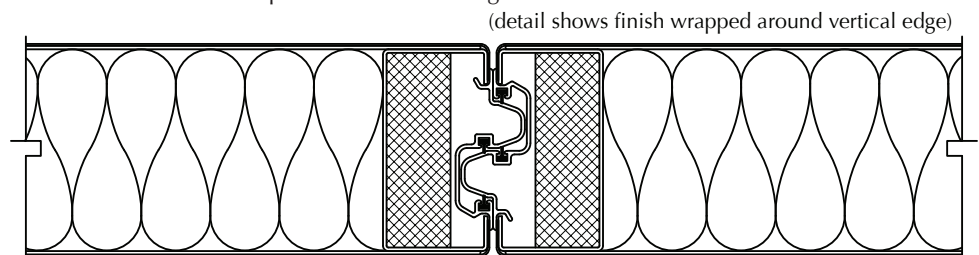
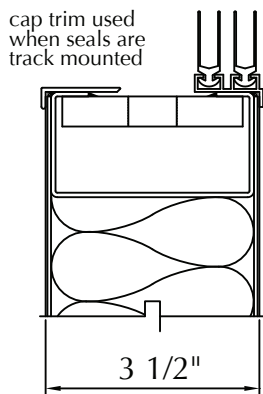
40 N.I.C.
 GUARANTEED WHEN SPECIFIED
 TESTED IN ACCORDANCE WITH ASTM E336-05.
 42 N.I.C. IN ACCORDANCE WITH ASTM E336-97



SPECIFICATIONS

PANEL CONSTRUCTION: Acoustical panel is approximately 3½" inches thick. Panel faces are minimum 16-gauge CR steel sheet. Face sheets are robotically fusion welded to 16-gauge, vertical and 14-gauge, horizontal steel frame members. Steel panel faces are permanently stiffened by steel members welded to interior surfaces. Interior cavity is filled with appropriate sound attenuating material. Panel weight is approximately 7.5 pounds per square foot. Entire perimeter of panel is encased in aluminum alloy trim. Panel is a steel weldment with one-piece face sheets.

ACOUSTICAL PERFORMANCE: Operable wall with this panel construction shall serve as an effective barrier with a sound transmission class rating of 53 S.T.C. based on a full-scale laboratory test in accordance with ASTM-E90 and conducted at a NVLP acoustic laboratory. Certification of such laboratory tests shall be furnished upon written request. Operable wall shall achieve a minimum 40 N.I.C. when field sound tested in accordance with ASTM E-336-05, or 42 N.I.C. with ASTM E-336-97 provided that the surrounding building construction is compatible with this rating.



(detail shows finish wrapped around vertical edge)