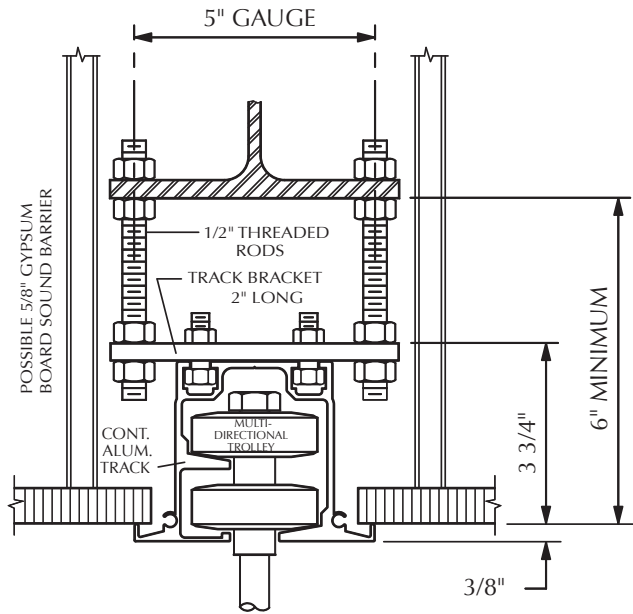


# 3|TRACK| OMNIDIRECTIONAL



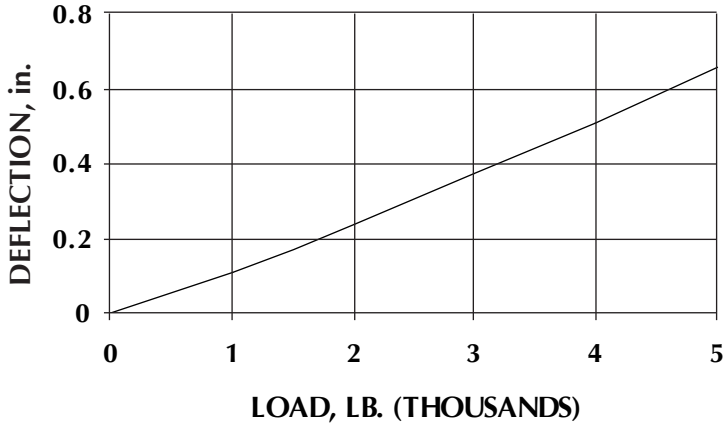
Using multi-directional ball bearing trolleys, this system is capable of universal movement throughout the track system without the use of radius turns or switching mechanism.

As is typical of right angle and sharp angle track systems, it is necessary for the operator to consciously "steer" the panel to the proper direction at all intersections. Thought must be given to avoid reversing panels or placing panels in the wrong sequence.

This track system is for manual individual (operation) panels, each with two trolleys.

Panel weight should be limited to 800 pounds, and height to 16 feet.

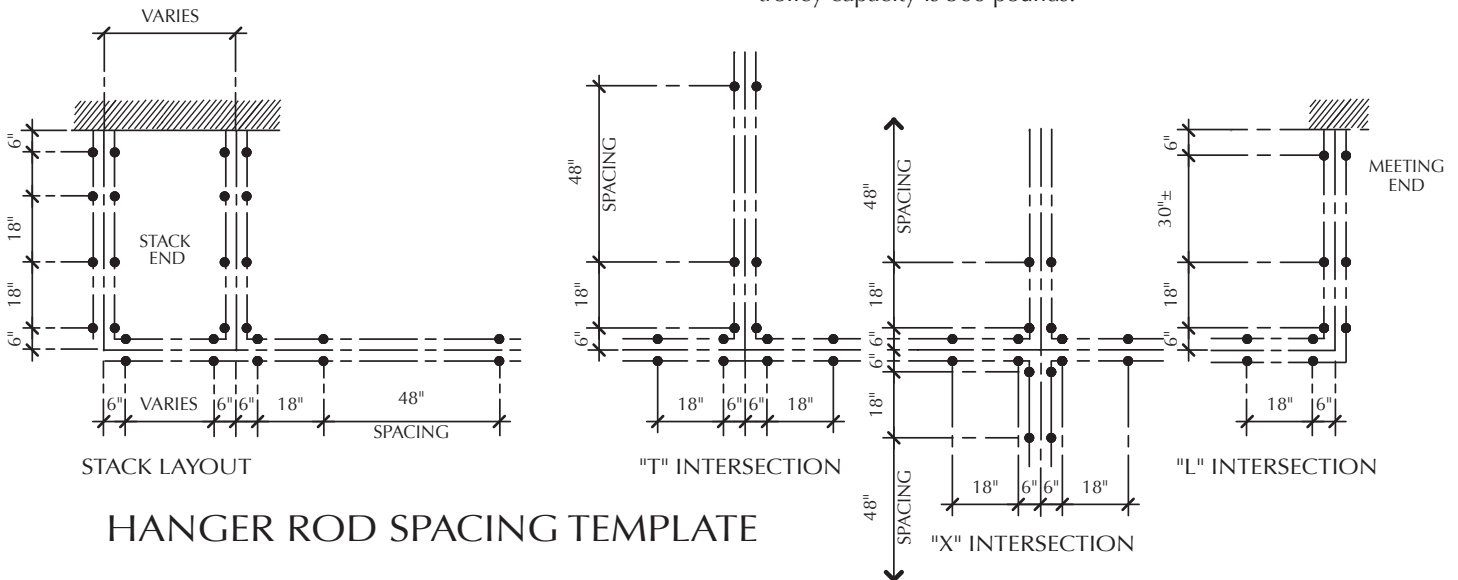
LOAD vs DEFLECTION



**SPECIFICATIONS**

**TRACK:** Top track shall be Advanced #3 aluminum alloy track incorporating soffit trim. Joints aligned by concealed steel dowels, intersections welded. Suspension brackets bolted to top portion of track. Brackets spaced 2'-0" o.c. maximum in stack area and 5'-0" o.c. maximum elsewhere. Track assembly weight approximately 7.5#/Lin. Ft.

**TROLLEYS:** Individual panels top supported by two trolleys. Trolleys shall each have two ball bearing wheels and attach to panel with 5/8" diameter pendant bolt. Each panel shall be capable of negotiating any angular turn or intersection, including 90° degree turns at "L", "T" and "X" intersections of the supporting track. Individual trolley capacity is 500 pounds.



HANGER ROD SPACING TEMPLATE