

Image®



World Class® Glass Operable Walls by Advanced Equipment Corporation



**advanced
equipment®**

® C O R P O R A T I O N

Established 1957

IMAGE

INCOMBUSTIBLE STEEL, QUALITY, STRENGTH, PERFORMANCE, and VALUE at COMPETITIVE PRICES. WELDED TUBE STEEL FRAME.

- SINGLE or DOUBLE GLAZED.
- MANUAL or ELECTRIC OPERATION.
- PANEL HEIGHT: 30' max.
- MAX PANEL WIDTH: Folding operation 60", individual panel operation 96", sliding operation 180".
- PANEL WEIGHT: May range between 6.5 psf and 12 psf.
- NO FLOOR TRACK REQUIRED MOST APPLICATIONS.



San Diego Central Library,
San Diego, California
Tucker Sadler Architects
(pictured on front cover)

JW Marriott Ihilani,
Oahu, Hawaii
KOLLIN ALTOMARE Architects
"TNEMEC" finish protects from salt/air.
(pictured top to bottom):
Exterior view; interior view.

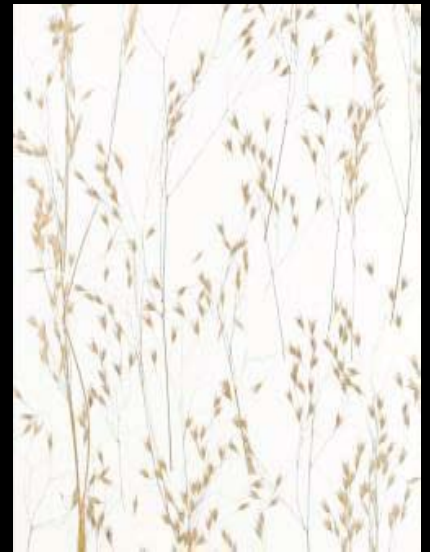


Seasons 52 Fresh Grill,
Los Angeles, CA
Parkway Construction





BLRB Architects,
Tacoma, WA
BLRB Architects
Custom powder coated, one piece welded
steel frame.



Olympia City Hall,
Olympia, WA
BELAY Architecture
Glazed with "Lumicor" resin panels.



VISIT OUR WEBSITE

www.advancedequipment.com

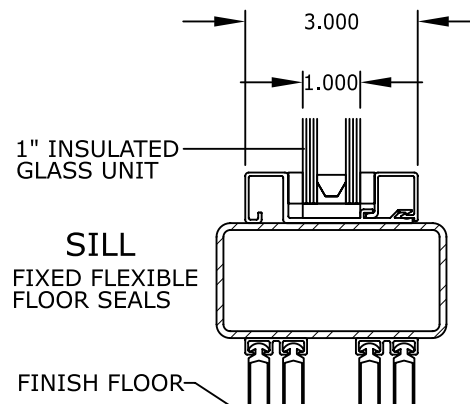
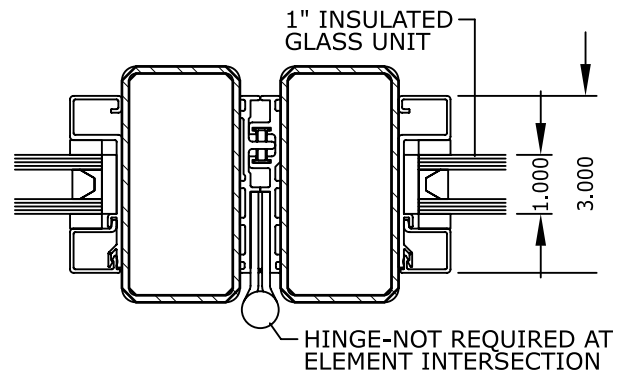
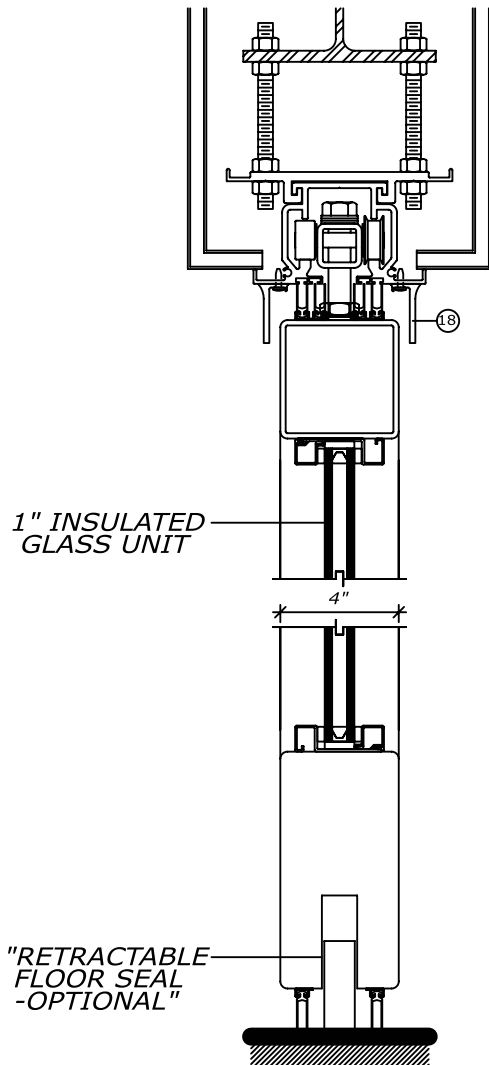
for easy access to a wide range of design and application tools:

- Track selector guide
- Specifications
- Finish and glazing choices
- Configuration and storage options
- Downloadable AutoCad® files

OPTIONAL LUMBER FINISH



The Summit at First Hill Synagogue,
Seattle, WA
MITHUN Architects
Custom wood clad finish.



ADVANCED EQUIPMENT CORPORATION

2401 WEST COMMONWEALTH AVENUE, FULLERTON, CA 92833

P: 714-635-5350 F: 714-525-6083 EMAIL: sales@aecorp.net

ADVANCED EQUIPMENT is a registered trademark of the Advanced Equipment Corporation Copyright 2011

PRINTED IN U.S.A. AEC FORM 2045