

Cune®



advanced
equipment®

CORPORATION

Established 1957

WORLD CLASS® OPERABLE WALLS



ELECTRIC OR MANUAL OPERATION

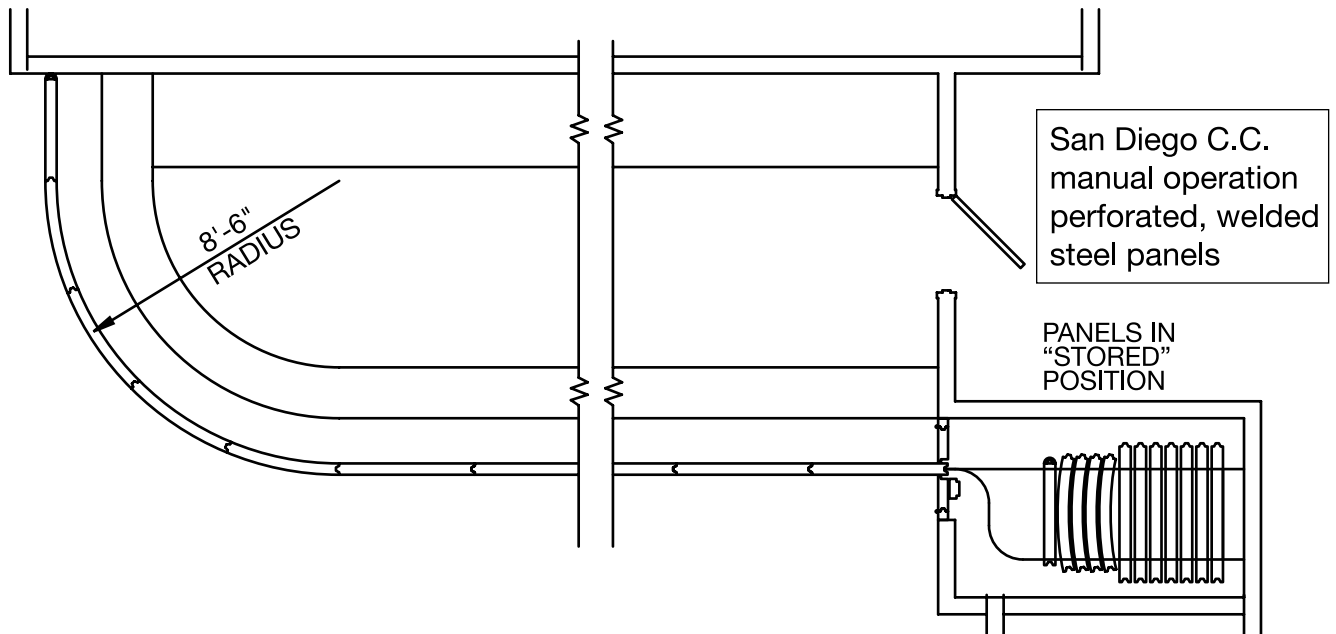
The use of CURVE panel operation on curved tracks of the same radius provides the designer with a space division option that may be more compatible with the room design than can be achieved with the typical straight-line operable wall.

Electrically operated curved systems typically consist of one or more sliding elements that store in a deep narrow pocket or parallel to an adjacent room wall. If the electric wall consists of several moving elements then it is typical to have each element travel on its own track with elements storing parallel to each other.

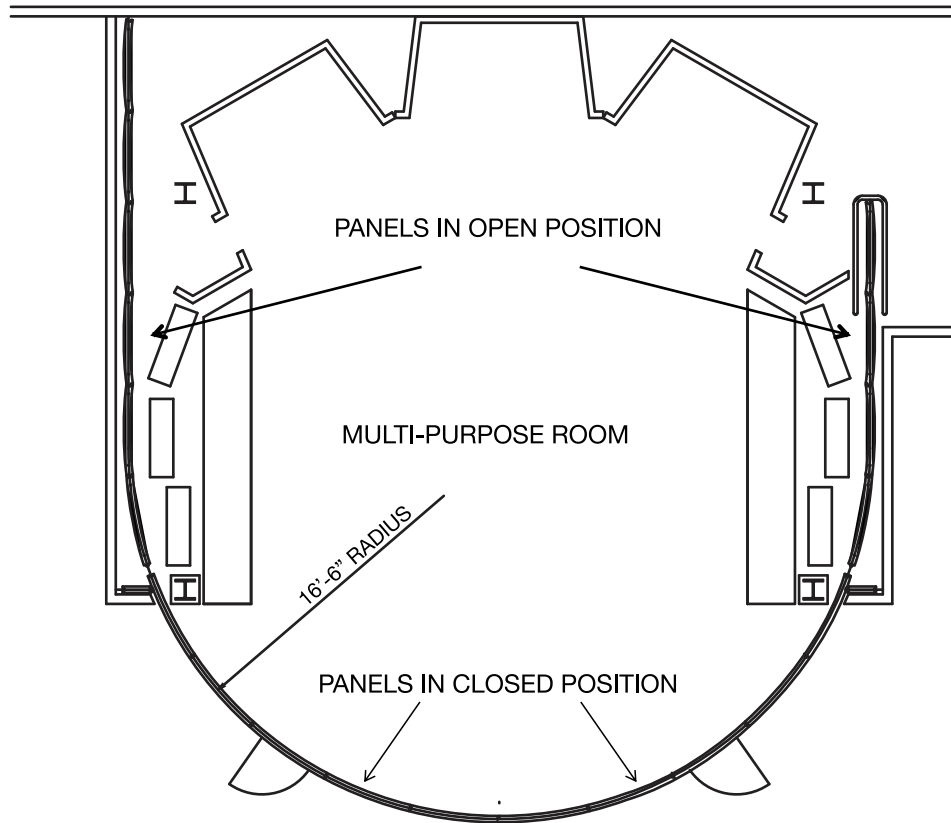


G.E. Capital, University of Connecticut, Storrs, CT
Bi-parting, electrically operated, curved panels and track with four panel elements traveling on two parallel tracks.
Perforated sound absorptive panel faces with paint finish, inset pass door with lite also by AEC.
Architect: CPG Architects and Planners

When manually operated, the designer can utilize all curved panels or can incorporate both curved and flat panels within the same operable wall. Panels are moved individually. Panel storage for manual operation is much the same as with traditional operable walls but pocket depth may be somewhat deeper in order to accommodate the curved elements

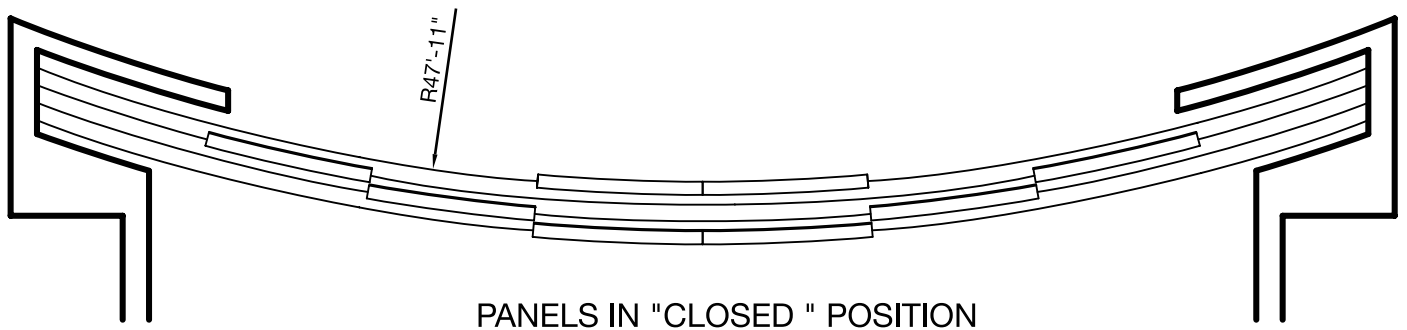


Plan View of Osram Sylvania wall

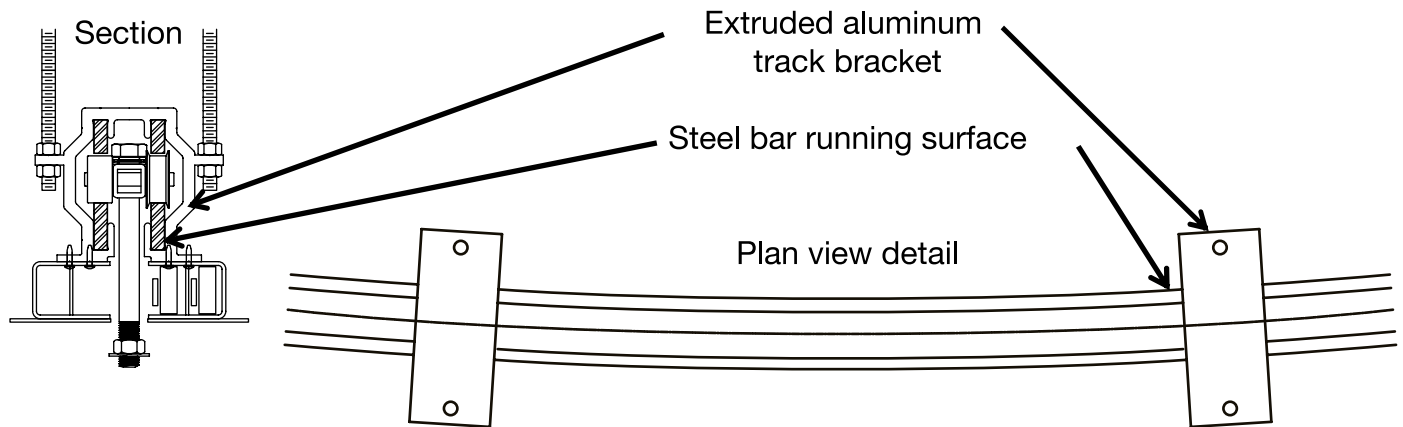


Osram Sylvania Lighting Laboratory, Danvers, MA
 Left: Curved ALPHA welded steel panels hinged in trains using "SOSS" fully concealed hinges suspended on single track, electrically operated, bi-parting, fabric finish with powder coat trim, custom color seals and inset pass doors.
 Architect: Design +

Right: Curved ALPHA welded steel panels suspended from curved parallel extruded aluminum track, electrically operated, fabric finish with powder coat trim, custom color seals and inset pass doors.



Advanced Equipment No. 4 curved track



Left: i2 Technologies, Inc. Dallas, TX
 Alpha panel, curved, electrically operated wall with groups of panels joined to create three wall elements. Wall elements are stacked when stored.
 Architect: The Lauck Group

Right: Wachovia Bank, Charlotte, NC
 Electrically operated, curved, welded tubular steel frames with lumber finish: curved aluminum track. Water jet cut aluminum grill with custom powder coat finish.
 Architect: Fishero, McGuire, Krueger Architects

ADVANCED EQUIPMENT CORPORATION

2401 WEST COMMONWEALTH AVENUE, FULLERTON, CA 92833

P: 714-635-5350 F: 714-525-6083 EMAIL: sales@aecorp.net

ADVANCED EQUIPMENT is a registered trademark of the Advanced Equipment Corporation Copyright 2011

PRINTED IN U.S.A. AEC FORM 2045